

# ReachDeck INSTRUCTIONS



Our website uses **ReachDeck** to **read aloud** and **translate** our webpages. It does not translate or read aloud images that include text or webpages external to our website. It uses Google translate for translating the text and will read the text when there is a matching voice available.



Select the ReachDeck icon at the top of the screen on the right side.

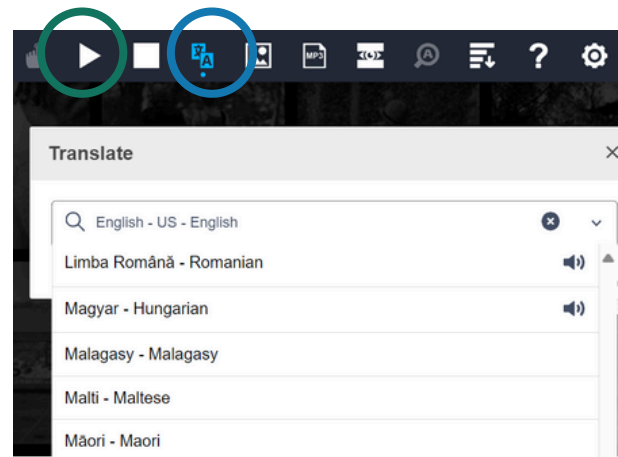


The ReachDeck toolbar will be displayed.



To choose your language click on the **translation icon**.

If you would like the content to be **read aloud** in your language. Press the play button.



To stop **translating** or having the content **read aloud**, click on the stop icon, then close (X) on the toolbar.

