



Choose
health!

ML MIDDLESEX-LONDON
HEALTH UNIT

Community Health Status Resource

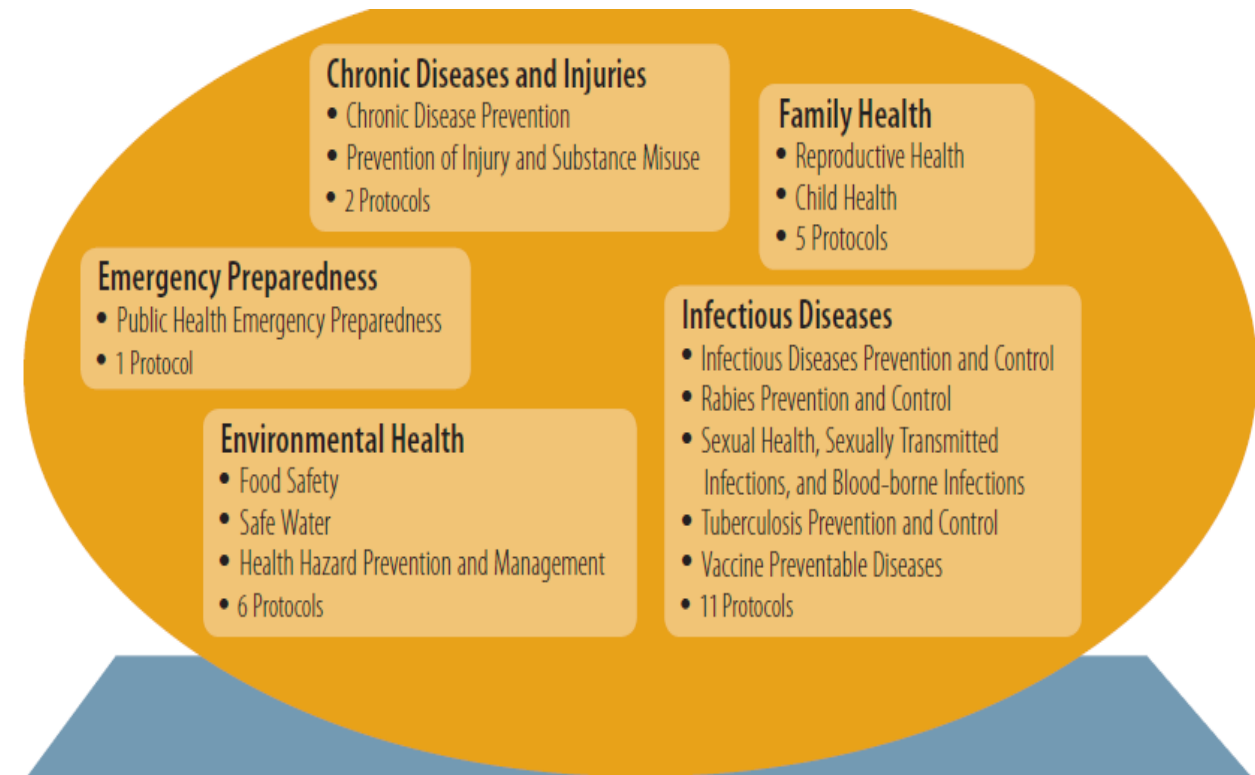
Board of Health
October 18, 2012

Bryna Warshawsky
Acting Medical Officer of Health

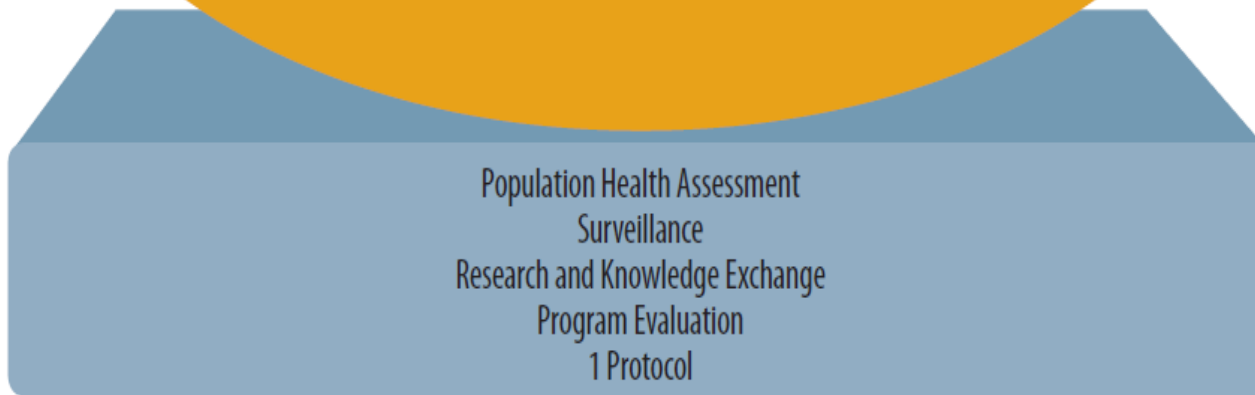
Ontario Public Health Standards 2008

The Ontario Public Health Standards are published as the guidelines for the provision of mandatory health programs and services by the Minister of Health and Long-Term Care, pursuant to Section 7 of the Health Protection and Promotion Act, R.S.O. 1990, c. H.7.

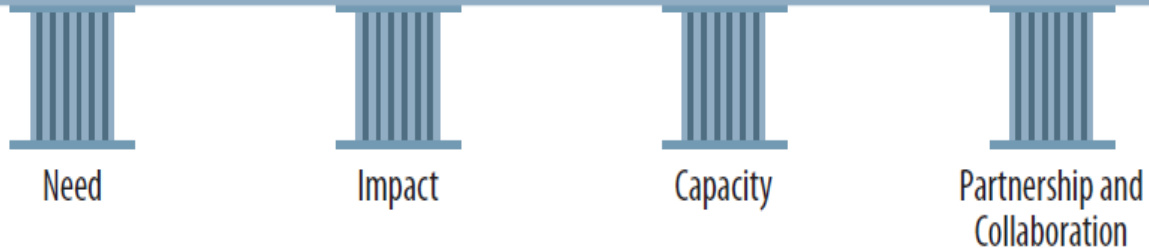
Program Standards and Protocols



Foundational Standard and Protocol



Principles



Community Health Status Resource

- Web based, updateable
- Review of the health of the community and the contributing factors
- To assist us in planning our programs and determine if they are working
- Of value to our partners

The Community Health Status Resource

provides a general overview of the Community Health Status in Middlesex-London



Demographics

characteristics of the population

Social Determinants of Health

social and economic factors that contribute to health

Deaths

leading causes of death in the population

Hospitalizations

leading reasons for being admitted to hospital

Chronic Conditions

common chronic illnesses and cancer prevention by screening

Lifestyle Behaviours

behaviours associated with chronic illnesses and injuries

Topics

- Demographics
- Social Determinants of Health
- Deaths
- Hospitalizations
- Injuries
- Chronic Conditions
- Lifestyle Behaviours
- Communicable Diseases and Immunization
- Reproductive Health
- Child and Youth Health
- Environmental Health

The Community Health Status Resource

provides a general overview of health status in Middlesex-London



Demographics

characteristics of the population



Social Determinants of Health

social and economic factors that contribute to



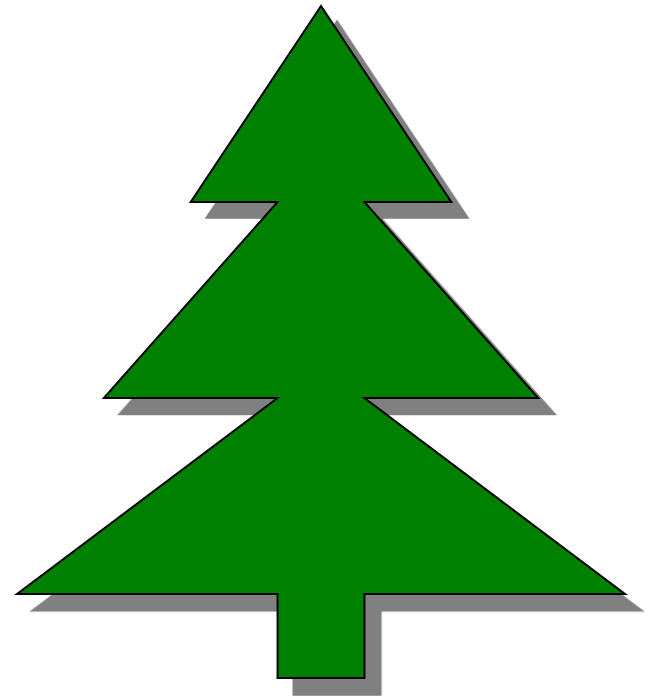
Deaths

leading causes of death in the population

Characteristics

- Numbers
- Trends
- Comparisons
- Maps
- Statistics

- Web-based
- Evergreen



Uses

BY

- Public health
- Community planners
- Health care providers
- Social service organizations
- Media
- Academics
- Students

FOR

- Planning
- Evaluation
- Advocacy
- Media reports
- Research
- Grants
- Projects

Acknowledgements

- Sarah Maaten, Epidemiologist
- Evelyn Crosse, Epidemiologist
- Alison Locker, Epidemiologist
- Bernie Lueske, Data Analyst
- Carolyn Coppens, Contract Epidemiologist
- Echidna
- Staff, Managers and Directors
- Dr. Graham Pollett, Former Medical Officer of Health