

Healthy Babies Healthy Children



The program is for prenatal families and families with children from birth to 6 years of age and offers:

Universal Program: Providing screening for all pregnant and postpartum families, and families with young children.

Home Visiting Program: Providing more intensive services and support for families with children who are at risk of not reaching their full potential.

The Program is designed to:

- improve child health and development
- increase parenting confidence and knowledge
- enhance parenting support and,
- increase integration of programs and services that support healthy child development.



Middlesex-London Health Unit
50 King St., London ON N6A 5L7
Tel: 519-663-5317 • Fax: 519-663-9581

Strathroy Office - Kenwick Mall
51 Front St. E., Strathroy ON N7G 1Y5
Tel: 519-245-3230 • Fax: 519-245-4772



Healthy Babies Healthy Children

Information for Service Providers
and Primary Care Practitioners



What is Healthy Babies Healthy Children?

Healthy Babies Healthy Children (HBHC) is a preventative/early intervention program designed to help children achieve their full potential. The HBHC program is offered by every health unit in Ontario. HBHC is built upon the awareness that early childhood experiences make a critical and long term difference in children's development and their health and well being.

www.healthunit.com



When to use the HBHC Screen or make referrals to Healthy Babies Healthy Children?

The HBHC Screen is to be used during prenatal or postpartum periods or with children 6 weeks to 6 years of age as an Early Identification screen.

Prenatal Screen:

As early as possible in pregnancy, all women should be screened by physicians, midwives, other service providers, and prenatal clinics by completing the **HBHC Screen** and faxing it to the Health Unit at (519-663-8243). The Health Unit will follow-up with families where a need is indicated.

www.healthunit.com/resources-preconception-to-early-years#hb

Postpartum Referral:

For postpartum families with babies under 6 weeks of age who have not received a Public Health Nurse assessment, call **Health Connection at 519-850-2280** to refer them. Referrals should be made particularly for families who engage in risky health behaviours, have family and environmental stressors, limited education, limited family support, limited resources, are newcomers, or would benefit from further parenting support.

Early Identification Screen:

For families with children 6 weeks to 6 years of age, the **HBHC Screen** can be completed and faxed to the Middlesex-London Health Unit.

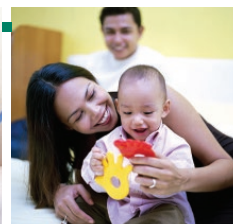
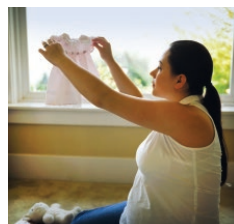
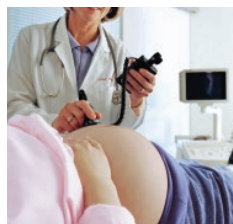
Early Identification Referral:

Refer families with children 6 weeks of age to 6 years who are at risk of problems with healthy child development. Referrals to the HBHC program can be made by health care professionals, other service providers or through a family self referral at any time during infancy or early childhood. The Nipissing District Developmental Screen (used by parents) and the Rourke Well Baby Record (used by physicians) may support your reason for a referral.

www.healthunit.com/resources-preconception-to-early-years#hb

The *Red Flags for Infant, Toddler and Preschool Children* booklet can be found on the Middlesex-London Health Unit website www.healthunit.com and can assist you in identifying developmental issues early. If there is a concern, it directs you on where you can refer families for help.

.....
To make a referral to the HBHC program, call directly to the Middlesex-London Health Unit Health Connection line 519-850-2280
.....



Who does this work with families?

Public Health Nurses (PHN) and Family Home Visitors (FHV) work together with families to promote physical, cognitive, communicative and psychosocial development of children. *Public Health Nurses* are registered professionals whose area of expertise is community health. *Family Home Visitors* are experienced parents who have completed specialized training to mentor families.

Prenatal Referral:

Call Health Connection at 519-850-2280 to refer prenatal women who engage in risky health behaviours, have family and environmental stressors, limited education, limited family support, limited resources, are newcomers, or would benefit from further prenatal support.

Postpartum Screen:

After the baby is born, hospital nurses and midwives ask mothers for their consent to fax the **HBHC Screen** to the Middlesex-London Health Unit. HBHC services are initiated as appropriate. **Please encourage a mother with a new baby to consent to completing the HBHC Screen.**