



## The Clinic and Contraception

Home > Health Topics

Health Topics
Abuse
Active Living
Alcohol & Other Drugs
Beauty and Body Art
Breastfeeding
Cancer
Cannabis
Community Design
Coronavirus
Dental Health
Diseases
Emergency Management
Environment
Flu
Food and Healthy Eating
Food Safety
Health Equity
Healthy Aging
Immunization
Infectious Diseases
Inspections
Opioids
Parenting
Perinatal Mental Health
Physical Activity
Pool Safety
Pregnancy
Road Safety
Safety
School Health
Sun Safety
Ticks & Lyme Disease
Tobacco & Vapour

## Health Topics

The Middlesex-London Health Unit provides up-to-date and accurate information on a variety of topics, programs, services and research, including, but not limited to:

<a href="#">Abuse</a>	<a href="#">Healthy Aging</a>
<a href="#">Active Living</a>	<a href="#">Immunization</a>
<a href="#">Alcohol and Other Drugs</a>	<a href="#">Infectious Diseases</a>
<a href="#">Beauty and Body Art</a>	<a href="#">Inspections</a>
<a href="#">Breastfeeding</a>	<a href="#">Nutrition</a>
<a href="#">Cancer</a>	<a href="#">Opioids</a>
<a href="#">Cannabis</a>	<a href="#">Parent Resources</a> (including <a href="#">feeding your baby</a> , <a href="#">growth &amp; development</a> , <a href="#">mental health</a> , and more)
<a href="#">Child Safety</a> (including <a href="#">concussions</a> , <a href="#">safe sleep</a> , <a href="#">poison prevention</a> , <a href="#">drowning prevention</a> , <a href="#">home safety</a> , and more)	<a href="#">Perinatal Mental Health (PMH)</a>
<a href="#">Community Design</a>	<a href="#">Physical Activity</a>
<a href="#">Dental Health &amp; Services</a>	<a href="#">Pregnancy</a>
<a href="#">Drinking Water</a>	<a href="#">Rabies</a>
<a href="#">Emergency Management</a>	<a href="#">Safety</a> (including <a href="#">food safety</a> , <a href="#">road safety</a> , <a href="#">child safety</a> , <a href="#">sun safety</a> , <a href="#">pool safety</a> , and more)
<a href="#">Environmental Health</a> (including <a href="#">climate change</a> , <a href="#">bed bugs</a> , <a href="#">mould</a> , <a href="#">lead</a> , and more)	<a href="#">School Health</a>
<a href="#">Flu</a>	<a href="#">Sexual Health</a>
<a href="#">Food Policy</a>	<a href="#">Tobacco and Vaping Products</a> (including <a href="#">steps to quitting</a> and more)
<a href="#">Food Safety</a>	<a href="#">Ticks and Lyme Disease</a>
<a href="#">Head Lice</a>	<a href="#">West Nile Virus</a>
<a href="#">Health Equity</a>	<a href="#">Workplace Health</a>

Website: **healthunit.com**

Phone number: **519-663-5317**

# The Clinic - London

Located at 355 Wellington St., London, ON inside Citi Plaza.

## **Birth Control Clinic:**

*Monday:* 1:00 p.m. to 3:00 p.m.

*Wednesday:* 9:00 a.m. to 11:00 a.m. and 1:00 p.m. to 3:00 p.m.

*Thursday:* 4:30 p.m. to 7:00 p.m.

## **STI Clinic:**

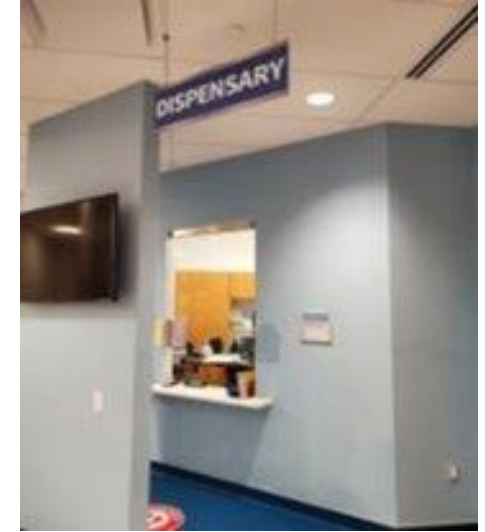
*Monday:* 4:30 p.m. to 7:00 p.m.

*Wednesday:* 4:30 p.m. to 7:00 p.m.

*Friday:* 8:30 a.m. to 10:30 a.m.



# The Clinic - London



# The Clinic - Strathroy

Located at 51 Front St., Strathroy, ON.

## **Public Health Nurse Hours:**

*Thursdays:* 11: 00 a.m. to 1: 00 p.m.  
and 2:00 p.m. to 4:00 p.m.

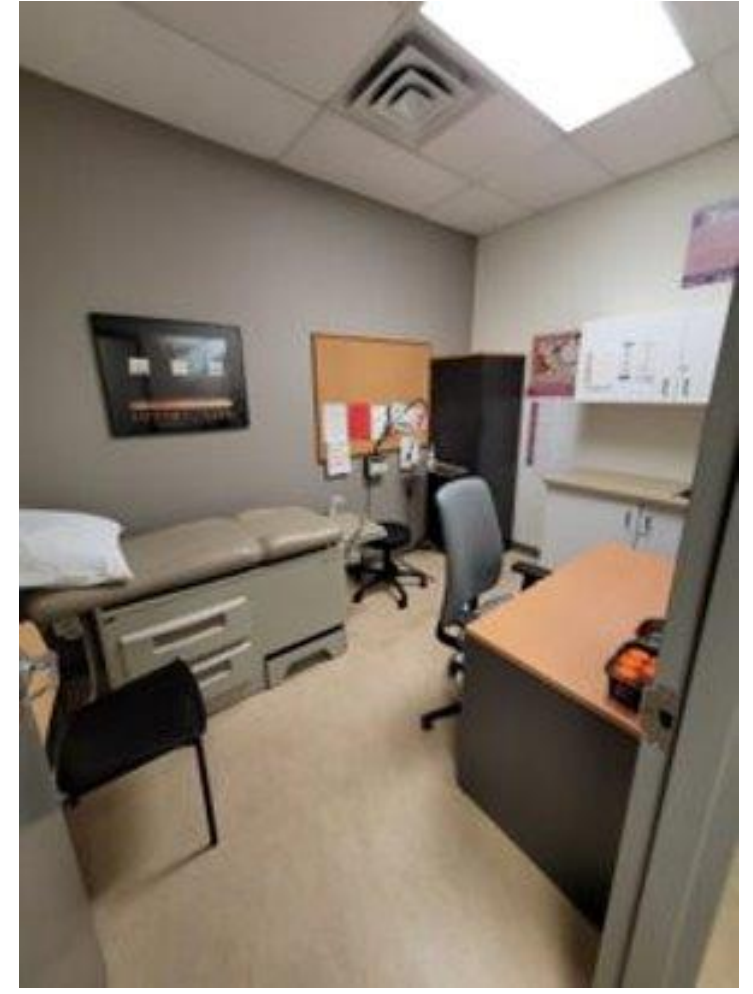
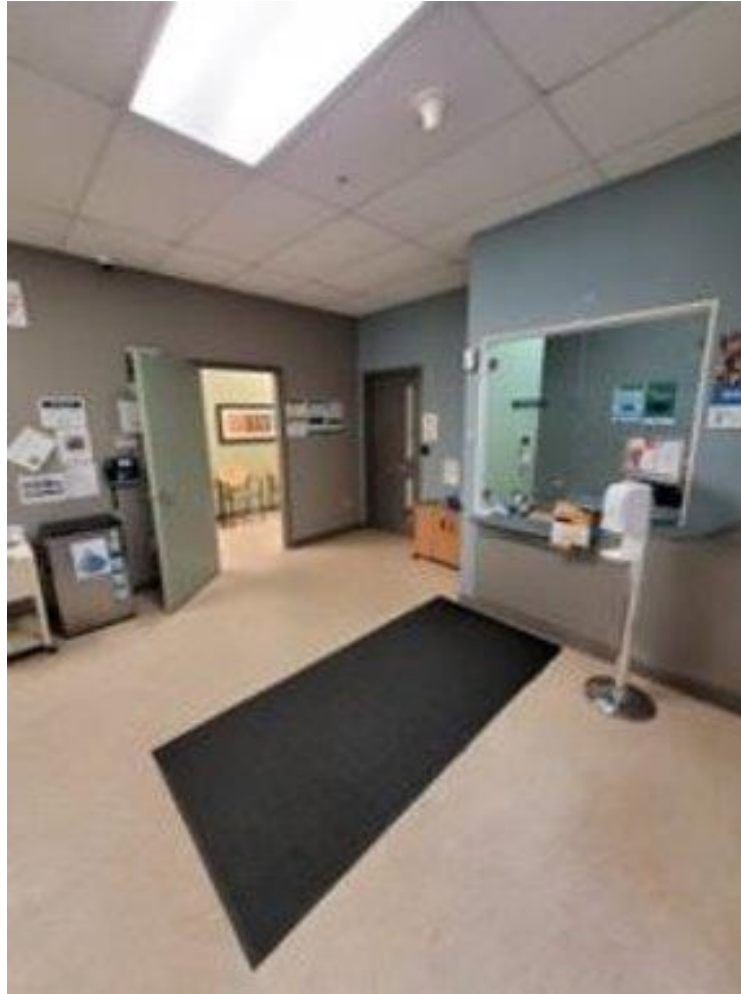
## **Physician Hours:**

*Every 4th Thursday:* 12:30 p.m. to 3:30  
p.m.





# The Clinic - Strathroy



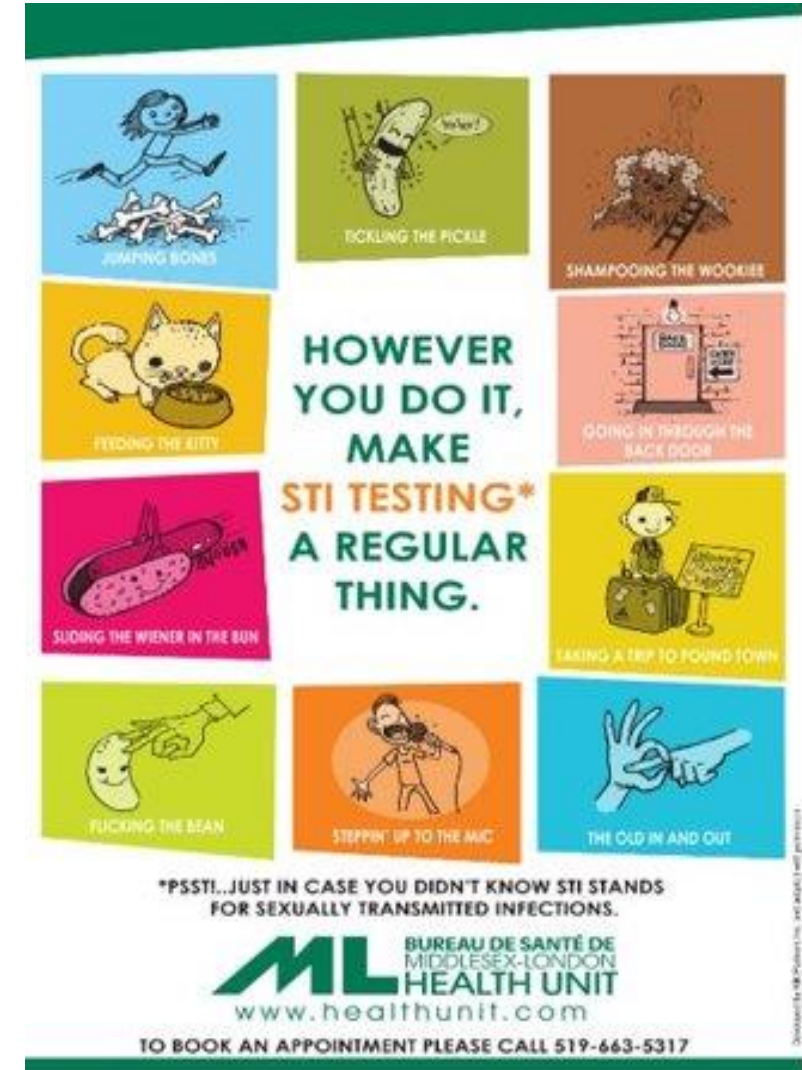
# Sexually Transmitted Infection (STI) Clinic

We offer:

- Free STI testing and treatment (no health card required)
- Free condoms

## STI Testing Process:

- 1.Call to book an appointment for the STI clinic
- 2.Come to the Health Unit
- 3.Check in with reception – you will be given a number
- 4.Wait until your number is called
- 5.Talk to a public health nurse in private treatment room
- 6.Visit with the doctor



# Birth Control Clinic

The following services are available to individuals under 50 years of age:

- Birth control counselling and prescription
- Low-cost birth control
- Low-cost emergency contraceptive
- Cervical cancer screening (pap tests)
- STI testing, pelvic pain assessment
- IUD/IUS consultation and insertion
- Free condoms

\*All female physicians\*

**The Clinic**  
519-663-5317  
355 Wellington St., Suite 110, London ON  
51 Front St. E., Strathroy ON

The Clinic offers a confidential and non-judgmental environment where clients can get answers to their sexual health questions, and are provided with what they need to make decisions that are right for them. All visits to The Clinic are confidential.

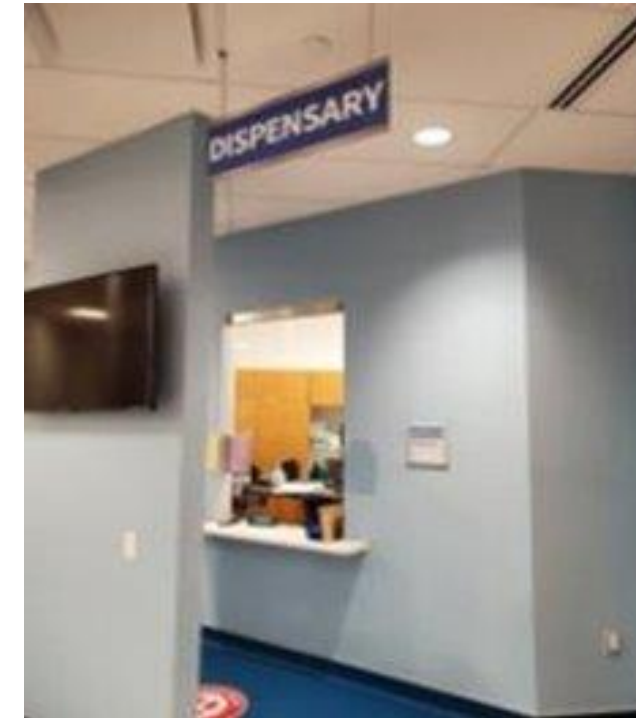
Birth Control Methods  
- Discussing your options  
Emergency Contraceptive Pill  
Sexually Transmitted Infections  
- Confidential testing  
- Free treatment  
Free Needle Exchange

**Know Your Choices**  
Sexual health for life

**ML** BUREAU DE SANTÉ DE  
MIDDLESEX-LONDON  
HEALTH UNIT  
www.healthunit.com

**The Clinic**  
519-663-5317

Birth Control  
Sexually Transmitted Infections (STI)  
Free Testing and Treatment  
Free Needle Exchange  
**ML** BUREAU DE SANTÉ DE  
MIDDLESEX-LONDON  
HEALTH UNIT  
www.healthunit.com

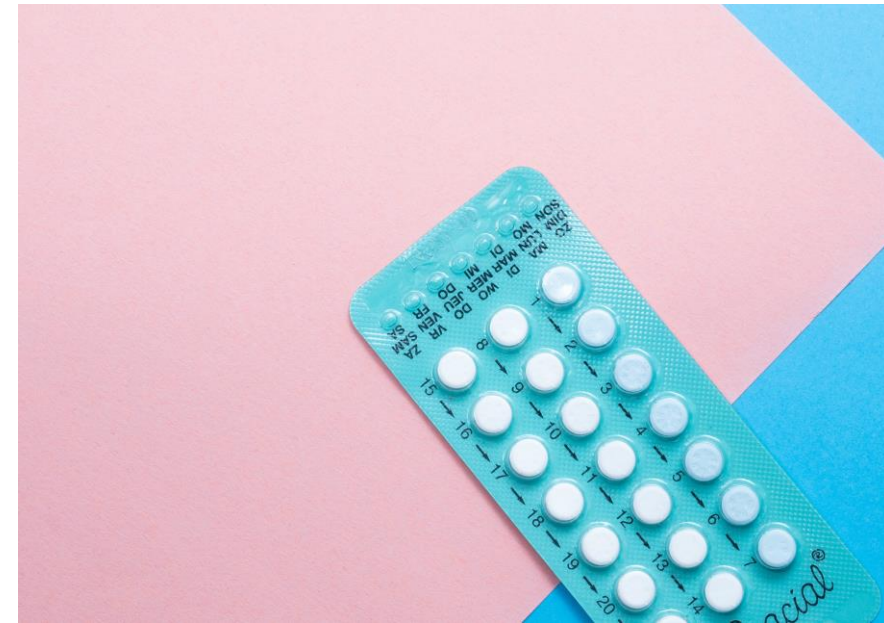


Dispensary/Pill Window -  
To purchase birth control  
and emergency contraceptive (no  
appointment needed, no age  
limit)



# Oral Contraceptive Pill

- There are two kinds of oral contraceptives – combined oral contraceptive (contains estrogen and progestin hormones) and progestin-only contraceptive.
- Prevents ovulation, thickens the cervical mucus to make it difficult for sperm to move, and changes the uterine lining to prevent implantation.
- The pill is taken at the same time every day, most commonly for 3 weeks followed by a pill-free or placebo pill week.
- 91% effective with typical use, over 99% effective with perfect use



(Reproductive Health Supplies Coalition, 2019d)

# Contraceptive Patch

- The patch is stuck to the skin and releases estrogen and progestin into the bloodstream.
- Stops ovulation and may also thicken the cervical mucus and thin the uterine lining.
- One patch is worn weekly for 3 weeks, changed at the same time and same day every week. The fourth week is a patch-free week (menstrual period week).
- Can be worn on the bum, stomach, back, or upper arms, not on the breasts.
- 91% effective with typical use, over 99% effective with perfect use. May be less effective for individuals who weigh more than 90 kg (198 lbs).



# Vaginal Ring

- Vaginal ring is inserted into the vagina and slowly releases estrogen and progestin over 3 weeks. Ring is removed for week 4 (menstrual period week).
- Prevents ovulation, may also thicken cervical mucus and thin the uterine lining.
- 91% effective with typical use, over 99% effective with perfect use.



(Reproductive Health Supplies Coalition, 2019e)

# Injectable Contraception

- Injection is given by a healthcare provider every 10-13 weeks. The shot only contains progestin, no estrogen.
- Prevents ovulation, thickens the cervical mucus, and changes the uterine lining.
- 94% effective with typical use, over 99% effective with perfect use.



(Polekhina, 2021)



# Contraceptive Implant

- A small flexible rod is placed under the skin of the upper inner arm by a healthcare provider. The implant releases progestin into the bloodstream over 3 years.
- The implant prevents ovulation, thickens the cervical mucus, and changes the uterine lining.
- Over 99% effective

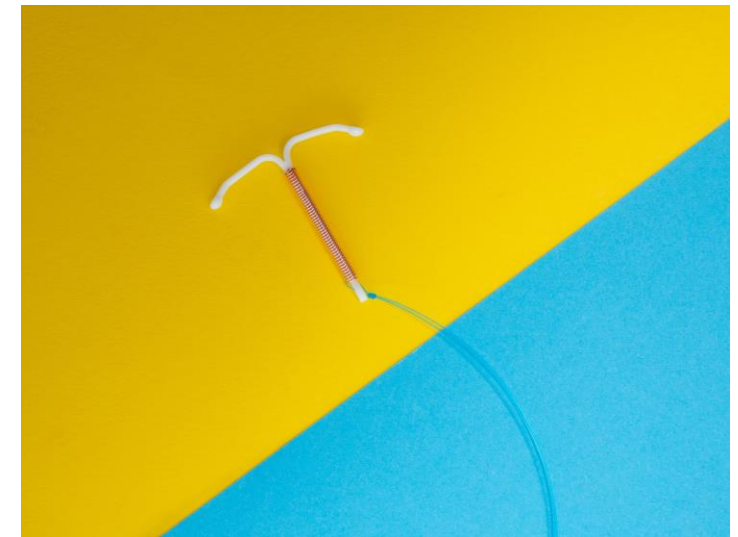
# Hormonal Intrauterine System (IUS/IUD)

- Small T-shaped device is inserted into the uterus and slowly releases progestin over 5 years.
- Thins the lining of the uterus and thickens the cervical mucus.
- 99.8% effective



# Copper Intrauterine Device (IUD)

- Small T-shaped device is inserted into the uterus. Copper ions are released into the uterus and significantly reduce movement of sperm. The IUD also acts as a foreign body and leads to an environment not suitable for pregnancy.
- Can remain inserted 3-10 years depending on device.
- Over 99% effective



(Reproductive Health Supplies Coalition, 2019a)

# Condoms

## Internal:

- A loose-fitting sheath with two flexible rings is inserted into the vagina to act as a barrier to prevent sperm and body fluids from entering. The internal ring sits inside to hold the condom in place, the outer ring sits at the opening to provide added protection.
- 79% effective with typical use, 95% with perfect use



(Reproductive Health Supplies Coalition, 2019b)

## External:

- The condom is worn over the penis to act as a barrier to prevent exchange of body fluid and sperm.
- 82% effective with typical use, 98% with perfect use



# Emergency Contraceptive

- Also known as the “morning after pill”
- Can prevent an unplanned pregnancy when no contraception was used, when contraception failed, or when contraception was used incorrectly
- Ideally taken within 24 hours after unprotected sex - effectiveness decreases every 24 hours
- [3 options](#) – Plan B, Ella, Copper IUD
- Plan B and Ella can be taken up to 5 days after unprotected intercourse
- Copper IUD can be used up to 7 days after unprotected intercourse



(Reproductive Health Supplies Coalition, 2019a)



(Reproductive Health Supplies Coalition, 2019c)

# Thank you!

**For further information or to book  
an appointment at the STI or Birth  
Control Clinic, please call 519-663-  
5317.**



Middlesex-London Health Unit. (2023). [Image of contraceptive patch] [Photograph].

Middlesex-London Health Unit. (2023). [Image of intrauterine contraceptive device] [Photograph].

Middlesex-London Health Unit. (2021). [Images of London clinic] [Photograph].

Middlesex-London Health Unit. (2021). [Images of Strathroy clinic] [Photograph].

Polekhina, D. (2021). *White and clear plastic syringe* [Photograph]. Unsplash. <https://unsplash.com/photos/white-and-clear-plastic-syringe-1SutQMy6UVU>

Reproductive Health Supplies Coalition. (2019a). *Red and white plastic hand tool* [Photograph]. Unsplash. <https://unsplash.com/photos/red-and-white-plastic-hand-tool-Is-oKcKl7d0>

Reproductive Health Supplies Coalition. (2019b). *Red condom on pink and yellow surface* [Photograph]. Unsplash. [https://unsplash.com/photos/red-condom-on-pink-and-yellow-surface-WMLE8Pc\\_VwM](https://unsplash.com/photos/red-condom-on-pink-and-yellow-surface-WMLE8Pc_VwM)

Reproductive Health Supplies Coalition. (2019c). *Two gray blister packs* [Photograph]. Unsplash. <https://unsplash.com/photos/two-gray-blister-packs-F2bTuiboieg>

Reproductive Health Supplies Coalition. (2019d). *White medication pill blister package* [Photograph]. Unsplash. <https://unsplash.com/photos/white-medication-pill-blister-package-fgqLiOKNjU8>

Reproductive Health Supplies Coalition. (2019e). *White plastic bangle* [Photograph]. Unsplash. <https://unsplash.com/photos/white-plastic-bangle-rek78dIV0Qs>

Society of Obstetricians and Gynaecologists of Canada. (n.d.). *Contraception*. [https://www.sexandu.ca/wp-content/uploads/2021/05/SOGC\\_14372\\_Contraception\\_DownloadablePDF\\_ENG\\_WEB.pdf](https://www.sexandu.ca/wp-content/uploads/2021/05/SOGC_14372_Contraception_DownloadablePDF_ENG_WEB.pdf)