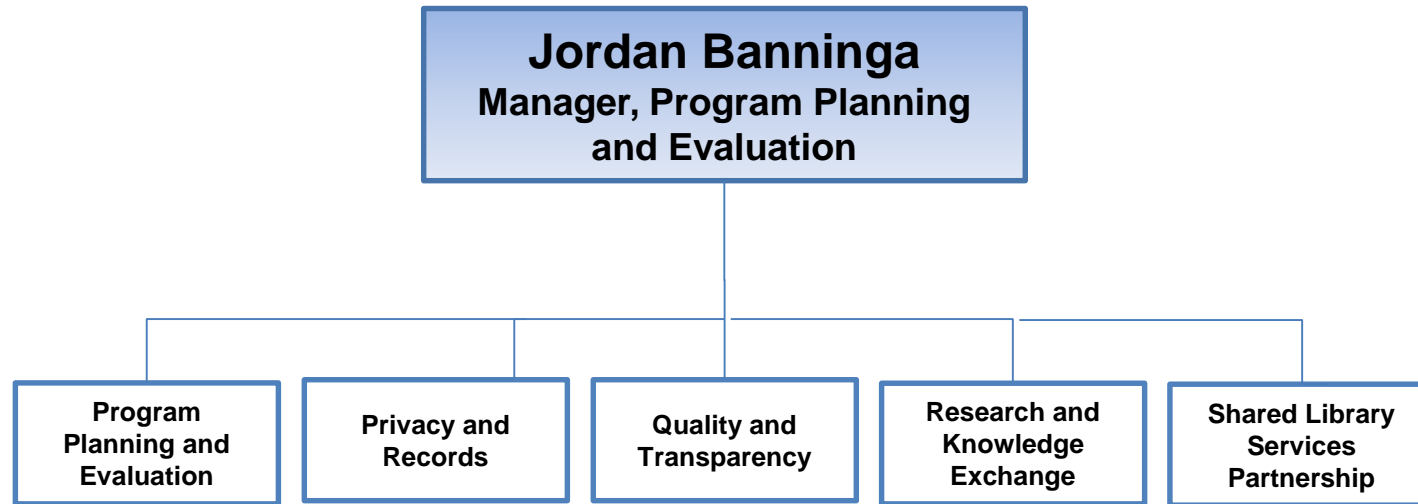


Healthy Organization

Program Planning and Evaluation

Total FTEs – 9.00 FTEs

Total Budget – \$873,039



Program Highlights:

- The Program Planning and Evaluation (PPE) Team provides support for multiple programs relating to the foundational standards and organizational requirements.
- Priorities for 2019 include:
 - Continued implementation of the Planning and Evaluation and alignment with the Annual Service Plan
 - Updating and implementing records management practices in preparation for the move
 - Supporting strategic projects and program projects requiring Program Planning and Evaluation Team expertise
 - Implementing a client experience survey with selected MLHU teams
 - Reviewing MLHU access copyright needs and practices