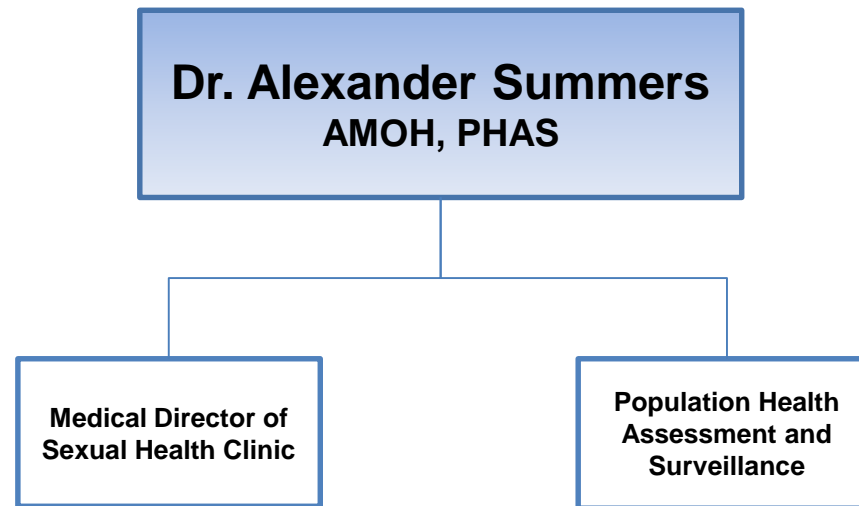


Office of the Medical Officer of Health
Associate Medical Officer of Health

Total FTEs – 6.50 FTEs

Total Budget – \$889,666



Highlights:

- Provides medical leadership to the Environmental Health and Infectious Disease division, serves as the Medical Director of the Sexual Health Clinic and a Clinic Physician, manages the Population Health Assessment and Surveillance Team (PHAST), and provides oversight of medical student and resident physician placement and teaching
- In addition to supporting a number of team- and division-level projects, PHAST is currently revising MLHU's public facing online health status portal that will provide updated information on the health status of the residents of London and Middlesex across a broad range of indicators