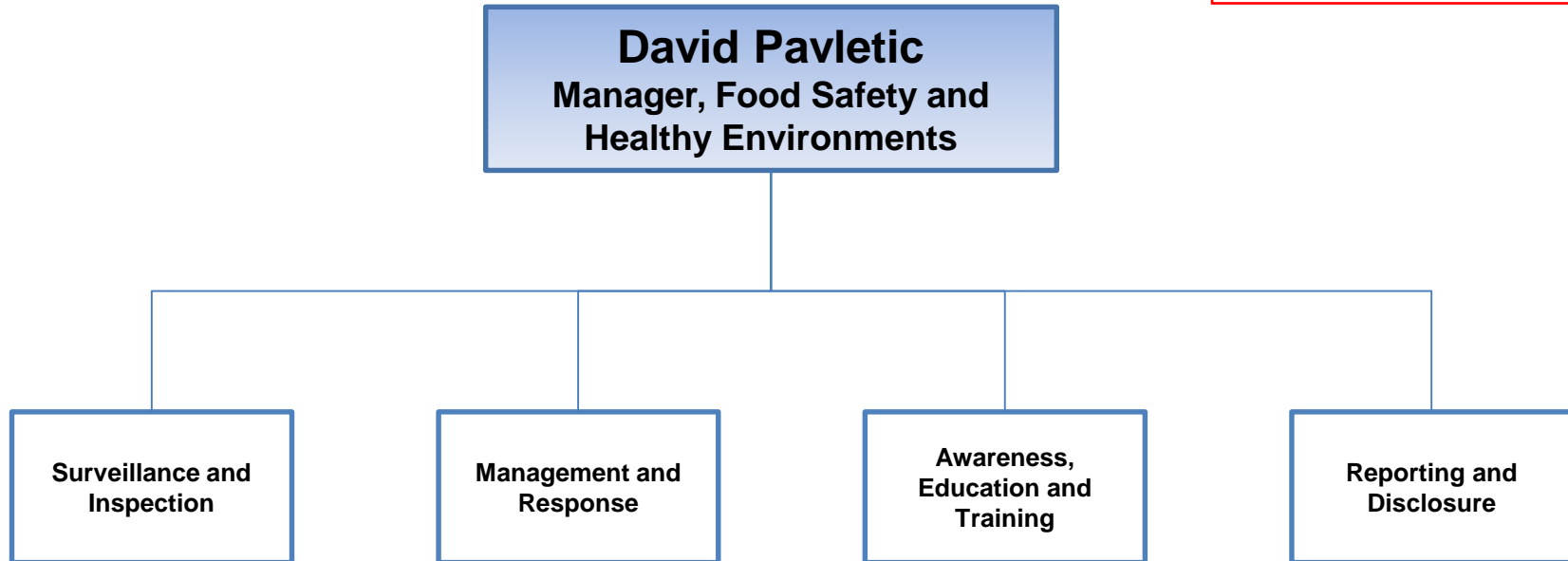


Environmental Health and Infectious Disease Food Safety and Healthy Environments

Total FTEs – 17.00 FTEs

Total Budget – \$1,727,958

2019-04-18-BOH-Program-update



Program Highlights:

- Establish a comprehensive, risk-based, housing inspection program with increased focus on Vulnerable Occupancies
- Build on the work from the MLHU Vulnerability Assessment to deliver interventions aimed at addressing the impacts from climate change through vulnerability planning
- Risk assess and research new emerging food preparation processes with a focus on high risk foods
- Revamp existing Disclosure site, to incorporate other program area inspections and implement new Hedgehog software program for PHIs