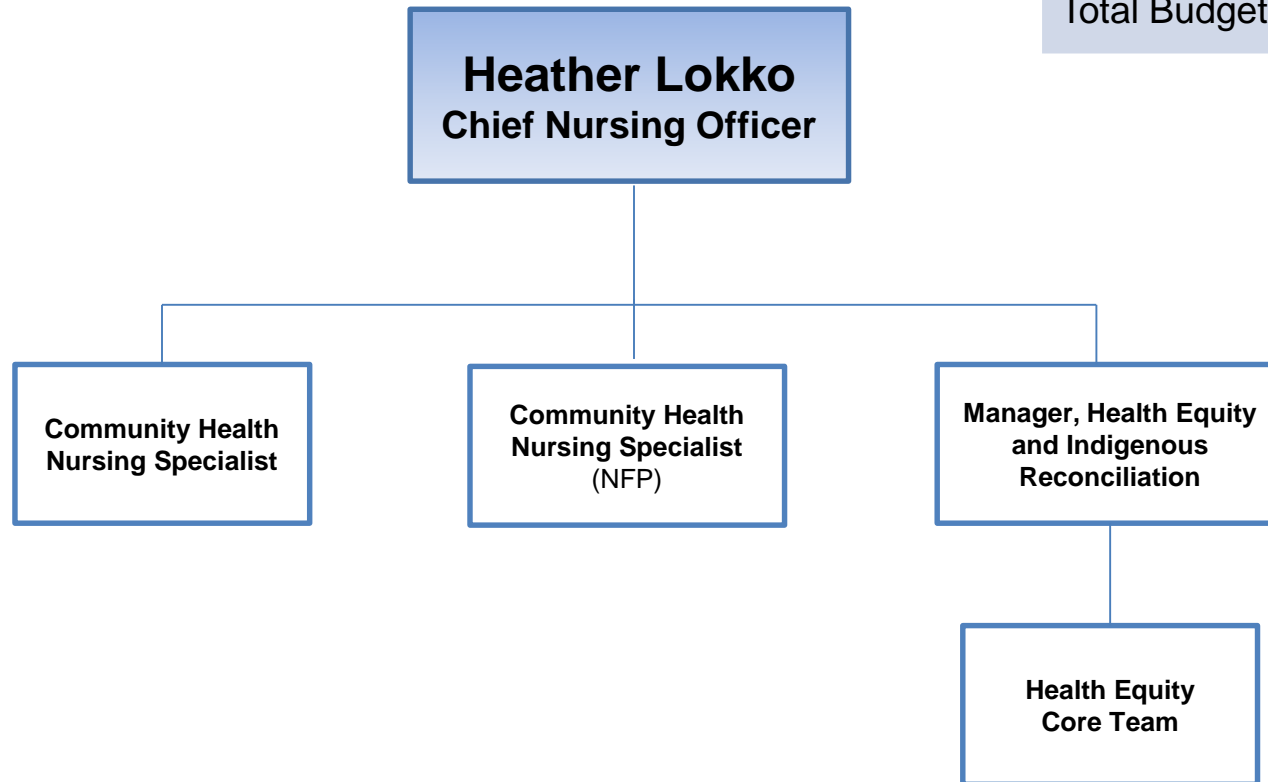


**Total FTEs – 6.30 FTEs**

**Total Budget – \$709,422**



## Program Highlights:

- CHNS roles work within the Quality & Transparency Program and Research & Knowledge Exchange Program and the Chief Nursing Officer Program
- Manager and the Health Equity Core Team work within the Healthy Equity Program
- Lead MLHU's strategic projects related to the social determinants of health and health equity
- Contribute to system-level health equity work
- Further develop and implement MLHU's Indigenous Reconciliation plan
- Provide leadership in quality nursing practice at the organizational, community and province-wide levels
- Support nursing practice leadership of the Nurse-Family Partnership program provincially