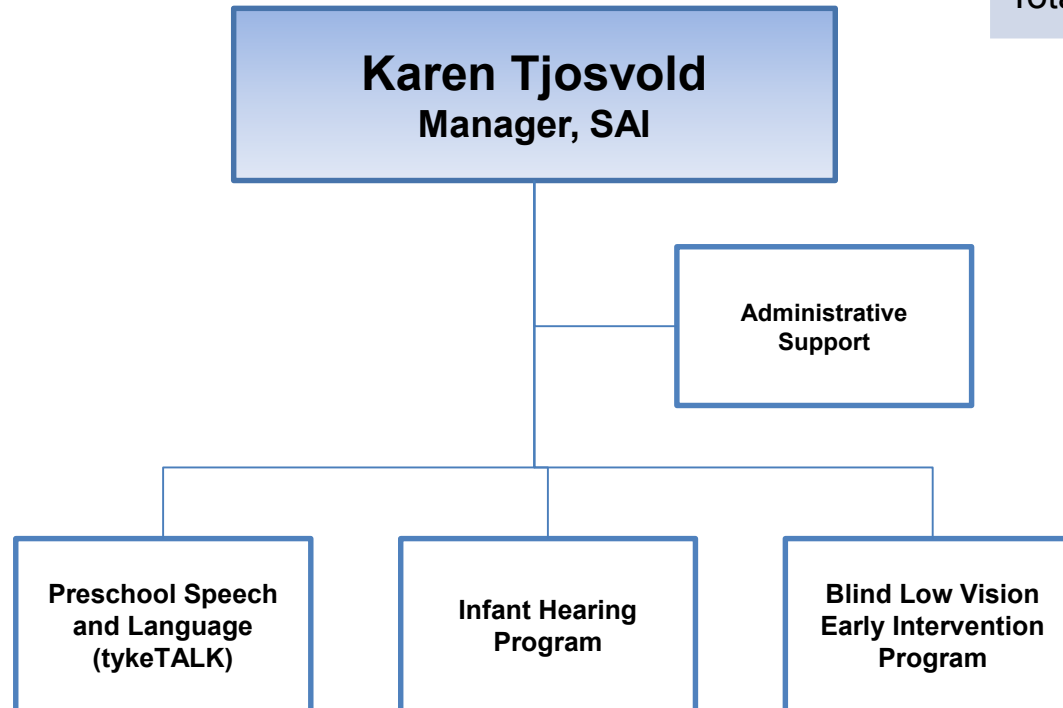


# Healthy Start Screening Assessment and Intervention

Appendix A to Report No. 006-19

Total FTEs – 4.40 FTEs

Total Budget – \$3,191,771



## Program Highlights:

- Contract with MCYS provide these early identification and early intervention programs - lead agency role shifting to Thames Valley Children's Centre in September 2019
- Program administration located at MLHU - direct services contracted to local service providers
- Provide speech and language therapy to about 2000 children per year
- Infant Hearing Program screens 10,000 newborns per year, with new bloodspot screen being fully implemented in 2019
- Approximately 30-35 babies are identified with permanent hearing loss per year and provided with supports and services through specially trained audiologists and speech language pathologists