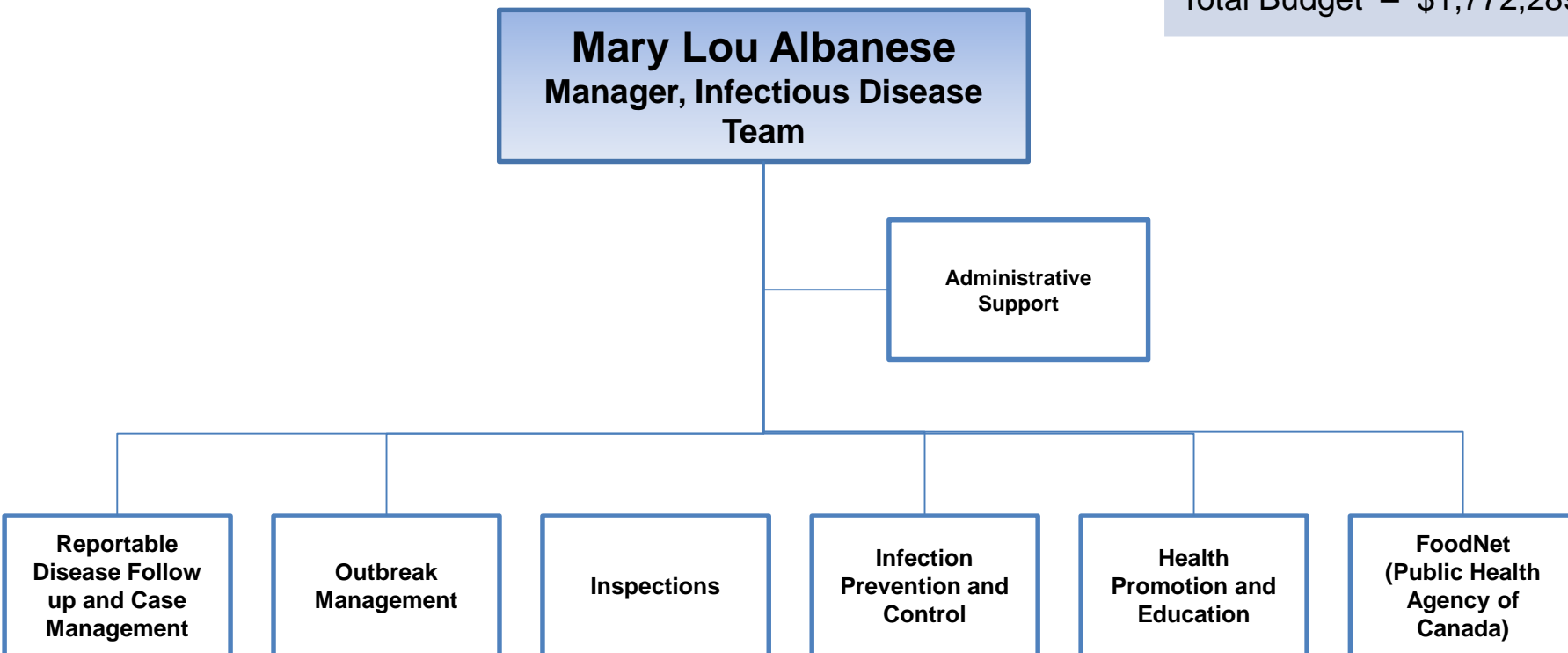


Total FTEs – 16.00 FTEs

Total Budget – \$1,772,289



Program Highlights:

- There are 55 reportable diseases managed by team with PHI's primarily investigating enteric disease (salmonella, Ecoli, Giardia) and PHNs investigating diseases such as tuberculosis, vaccine preventable diseases, hepatitis A etc.
- Daily staff respond to questions that come in via intake line, email and by social media
- Facilities are inspected to prevent food borne illnesses e.g. Long term care kitchens and infectious diseases e.g. child care facilities and Personal Services Settings (hair, nail salons, barber shops, tattoo shops); vaccine fridges inspection to ensure cold chain is maintained and investigate reported breaches
- Work with retirement homes, long term care homes, child care facilities and school to prevent and manage outbreaks such as influenza. All staff respond to community wide outbreaks e.g. invasive Group A Strep., hepatitis A
- All complaints regarding the infection control practices of any location in Middlesex and London are investigated e.g. dental office, medical clinic, floatation tubs