

APPENDIX B to Report No. 040-16

Figure 3. Reported count and rate of Hepatitis C in MLHU and Ontario, 2006-2015

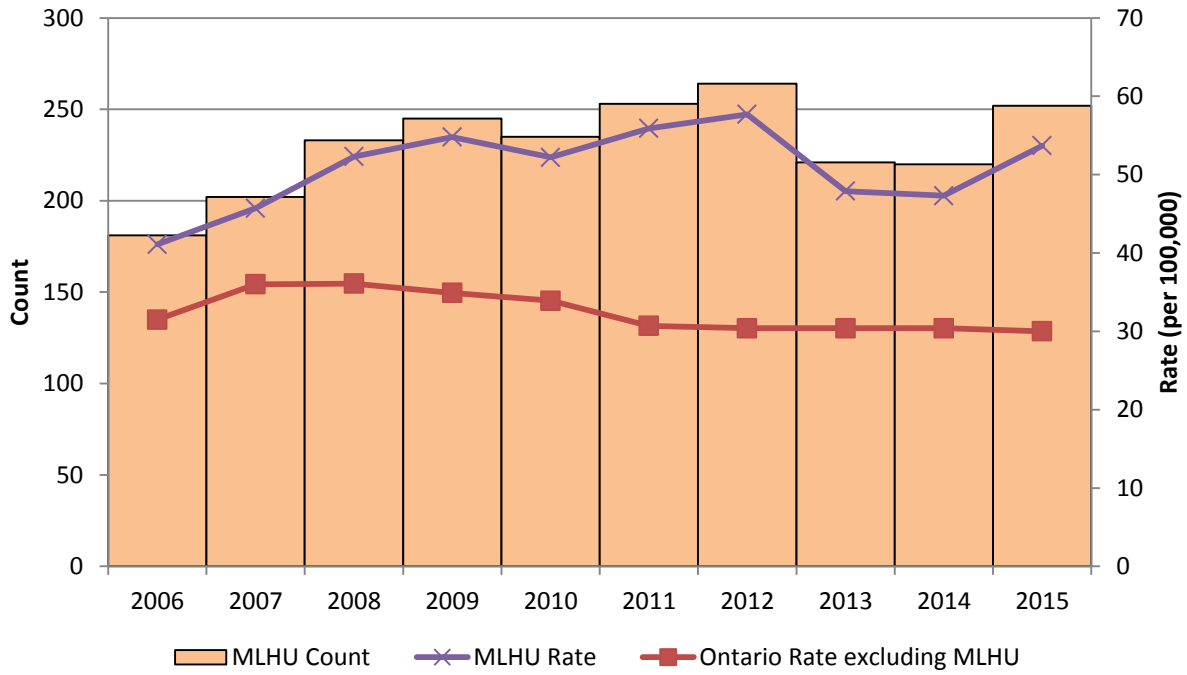


Table 1. Reported count and rate of Hepatitis C in MLHU and Ontario, 2006-2015

Year	MLHU Cases	MLHU Rate (/100,000)	Ontario Rate (/100,000)*
2006	181	41.1	31.5
2007	202	45.7	36.0
2008	233	52.3	36.1
2009	245	54.8	34.9
2010	234	52.2	33.9
2011	253	55.9	30.7
2012	264	57.7	30.4
2013	221	47.9	30.4
2014	220	47.3	30.4
2015	252	53.7	30.0

*Ontario rate excludes MLHU

Data source: PHO Query